



SPAIN LEGENDS SOCCER INSTITUTES

BUILDING A **LEGACY** FOR THE NEXT GENERATION

**SOCCER TRAINING & EVENT FACILITY
NEW JERSEY METROPOLITAN AREA**



FIFA WORLD CUP HOST "NEW JERSEY"
A HISTORICAL MOMENTUM

Unity Through Sports
Education • Community • Health





■ TOGETHER | Building a Better Future



Salvador Ballesta Vialcho President of Spanish Legends and Adrian Lee President of Kosmos Sports & Entertainment LLC,

In a landmark event during the signing of the partnership between Legends and Kosmos, The agreement marks the start of an strategic collaboration between both organizations, who promises to support the global soccer project starting in the USA and Asia

Kosmos Sports & Entertainment and **Legend of Spain** formalized a **5+10 Year Global Partnership** to launch the “Spain Legends Soccer Institutes” and its Global Events connecting sports, education, community & health across continents.



■ EXECUTIVE SUMMARY

Spain Legends Soccer Institutes · Building the Global Legacy Through Sports
FIFA World Cup Host Region 2026 · New Jersey Metropolitan Area

Transforming Sport, Education & Community

Kosmos Sports & Entertainment, in partnership with **Legends of Spain** backed by the **Royal Spanish Football Federation**, is building the first world-class soccer training & event facility in New Jersey - a project that unites **elite performance, education, and community impact** while delivering a Stable ROI for investors.

This initiative leverages the momentum of the **FIFA World Cup 2026** and Spain's legendary football legacy (Iniesta, Torres, Casillas, Xavi) to create an international hub for talent development and cultural exchange.

Our vision: Six Pillars

- **Sports** | Elite facilities for youth development, brand tied through FIFA 2026 & 2030 momentum.
- **Education** | Spain Soccer Methodology, scalable to schools & academies worldwide.
- **Community Engagement** | Scholarships, CSR programs, civic partnerships.
- **International Exchange** | Legendary ambassadors, global events, millions of impressions.
- **Infrastructure Innovation** | Sustainable design, naming rights, long-term asset growth.
- **Healthy City** | Integration with wellness, mental health & lifestyle partnerships.

Why Invest Now

- **Exclusive Brand Partnerships** | Legends of Spain backed by the Royal Federation backing.
 - **World Cup Momentum** | First mover advantage ahead of 2026 in NJ.
 - **Global Expansion** | USA, Spain, UK, Italy, Korea and Latin America.
 - **Stable ROI** | Multi-stream revenues from tuition, events, sponsorships & media.
 - **Community Impact** | Builds healthier, disciplined youth and strong civic ties.
-

The **Spain Legends Soccer Institutes** go beyond sports - creating a **sustainable ecosystem for talent, community, and global growth**.

Join us in Building the Legacy Through Sports, Education, Community & Health while capitalizing on a once-in-a-generation investment opportunity.



Unity Through Sports
Education • Community • Health

N E W J E R S E Y | N E W Y O R K

2 0 2 6



■ PARTNERS & COLLABORATORS

Prestigious institutions and legendary ambassadors global impact.



Legends of Spain

- Represents Spain's most iconic players (Iniesta, Torres, Casillas, etc.)
- Backed by the Royal Spanish Football Federation
- Provides global credibility and football legacy



Kosmos Sports & Entertainment

- Exclusive partners with Legends of Spain in the USA
- Global connector: USA, Spain, Korea, and Latin America
- Led by multicultural leadership with proven execution in real estate & sports ventures

HEALTHY
100

Healthy 100 / AWRC (UK), Creator

- Leader in sports science & sustainable city health
- Integrates wellness & innovation into community projects
- Trusted by global governments & research institutions



Sports Bid

- Specialists in global sports marketing & branding
- Expand sponsor visibility through digital ecosystems
- Drive worldwide fan engagement & long-term exposure

PRIME
CONSULTANTS
Int'l LTD.

Prime Consultants

- International platform linking sports, health & community programs
- Expertise in outreach, wellness & youth development
- Partner in global initiatives promoting safe and sustainable growth



Sphere Football Agency

- FIFA-licensed international football agency
- Provides personalized athlete management: contracts, transfers, fitness, nutrition, legal & financial advisory
- Represents 20+ professional athletes with a strong global growth plan



■ EXECUTION TEAM | Leadership & Operations

A world-class leadership team uniting global football legacy, business expertise, and community impact



Salvador Ballesta Vialcho – Strategic Director, Legends of Spain

- Former Spanish international player & coach
- Legendary network of Spain's football icons
- Strategic Bridge to Spain's football legacy & federations



Adrian E. Lee – CEO, Kosmos Sports & Entertainment, Global Ambassador

- Global Liaison: USA, Spain, Korea, UK & Latin America
- Multicultural Leadership: Korean heritage, Argentina roots, U.S.-based
- Proven expertise in real estate development, planning & execution
- Community Leader: President, Korean American Association of NJ



Joel Nuñez – Chief Operating Officer (USA)

- Operational Leader with U.S. sports & community expertise
- Oversees academy execution & large-scale projects
- Drives expansion through Kosmos global networks



Manuel Blanco – Director of Athlete Relations

- FIFA-licensed agent since 2010; 15+ years international experience
- Former senior agent at Wasserman, managing top international players
- Founder of Sphere Football Agency, representing 20+ athletes worldwide
- Personalized athlete management: contracts, transfers, fitness, nutrition, legal & financial advisory



Tom Kovac – Director of Marketing & Digital Platforms

- Specialist in global sports marketing & branding
- Digital Innovation for worldwide fan engagement
- Drives sponsor ROI & global exposure



■ COMPETITIVE ADVANTAGE



Spain Football Association

Legends of Spain backed by the Royal Spanish Football Federation serves as a strategic and brand partner, providing coaching and training assistance in a unique style, guided by some of the world's best soccer players.



Practice Theory Evolution

The institution is structured through a combination of field and in-class training. The Spain Soccer Methodology in collaboration with the FTI app and system and technology (classroom simulators) supports tactical training, health management, evolution tracking, and performance monitoring.



International Ecosystem

Athletes are given opportunities to travel internationally to any and all LE institutions and events to participate and meet role models like Andres Iniesta, Fernando Torres, Xavi Hernandez and other prominent figures. FTI are in Europe.

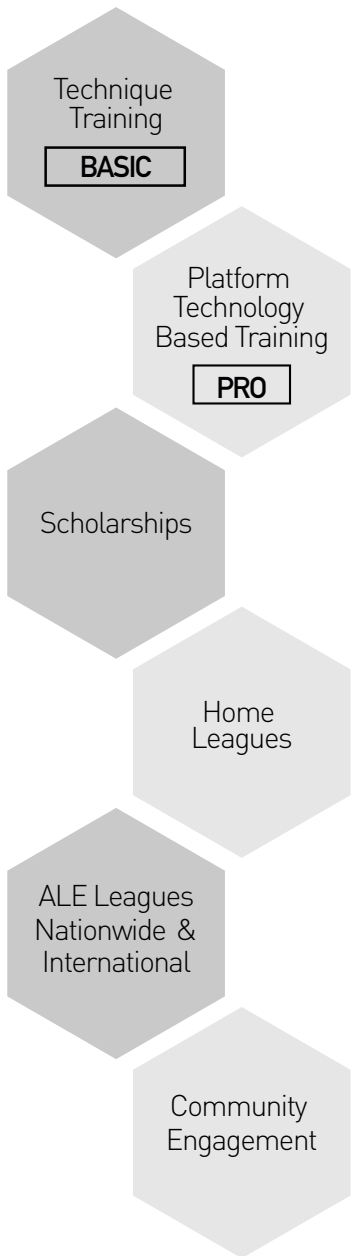


Exclusive Market Timing

Positioned ahead of the FIFA World Cup 2026 in New Jersey, the project leverages global visibility, securing first-mover advantage with a holistic academy + event facility model unmatched in the marketplace, with exclusive Legends of Spain commitment and support.



BUSINESS MODEL



School Year Soccer Program

"Train with professional coaches, access the FTI App, and enhance your skills through structured sessions."

Scholarship Program

"Exceptional talent can earn scholarships and progress to the top School Year Soccer Program."

Global Exposure

"Compete internationally, meet top players, and connect with local clubs for real-world experience."

Player Development

"Comprehensive training, mental coaching, fitness programs, and online support via the FTI App."

Career Pathways

"Personalized career guidance and connections to help players transition to professional soccer."

Community & Sustainability

"Engage with the community and practice sustainability through eco-friendly initiatives."

Talent Growth

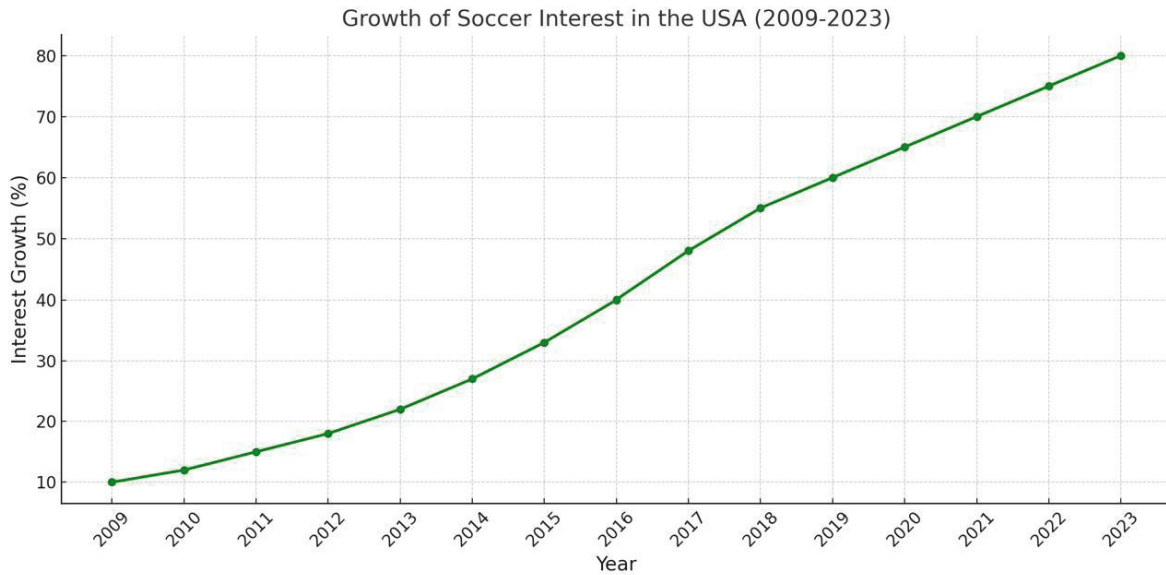
"We identify and nurture emerging talent, providing pathways to elite competitions."

Alumni Network

"Ongoing opportunities for alumni in coaching, mentoring, and soccer industry careers."

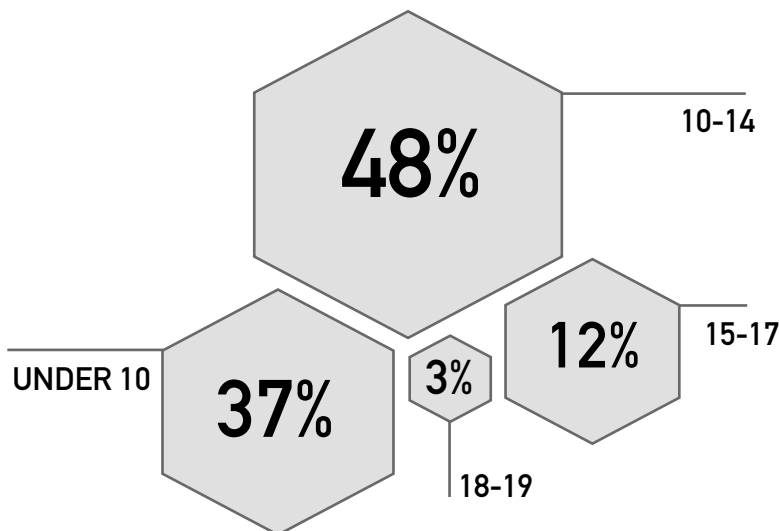


■ SOCCER GROWTH STATISTICS (USA)



Youth Soccer Market Analysis in Northern New Jersey

- Population (under age 20): **1,037,550**
- Approximately 48% kids are playing sports: **498,024**
- Northern NJ soccer players (under 20): **79,891** (7.7% from population)





■ IMPACT OF SOCCER ON YOUTH DEVELOPMENT

PHYSICAL BENEFITS:

- **Promotes Health:**
 - Reduces obesity by 30%, with active youth 60% less likely to develop obesity.
 - Enhances cardiovascular fitness, muscle strength, and flexibility, contributing to overall physical well-being.
 - 14 million youth in the U.S. play soccer, increasing physical activity levels.

MENTAL BENEFITS:

- **Boosts Mental Health:**
 - 67% of youth athletes report reduced stress after physical activity.
 - Improves emotional resilience, self-esteem, and confidence.
 - Youth in team sports are 20% more likely to demonstrate high emotional intelligence and effective coping strategies.
- **Enhances Focus & Cognitive Skills:**
 - Improves decision-making, concentration, and mental clarity through strategic play.

EDUCATIONAL & SOCIETAL IMPACT:

- **Instills Discipline:**
 - Teaches time management, teamwork, and leadership.
 - 75% of executives believe team sports improve leadership qualities.
- **Prevents Negative Behaviors:**
 - 60% of youth involved in sports report lower engagement in risky behaviors like drugs and crime.
- **Improves Academic Performance:**
 - Student-athletes are 10-15% more likely to achieve higher GPAs than non-athletes.
 - 98% of student-athletes graduate high school, compared to 88% of non-athletes.



Unity Through Sports
Education • Community • Health

Building a legacy for the next generation
Construyendo un legado para las futuras generaciones

다음 세대를 위한 유산을 만들어갑니다

NEW JERSEY | NEW YORK

2026



■ KEY STATISTICS

Reduces Obesity:

· Active youth are **60%** less likely to develop obesity.

Mental Benefits:

67% of youth report lower stress levels after playing sports.

Academic Focus:

· Student-athletes perform **10%** - **15%** better academically.

Graduation Rates:

98% of student-athletes graduate high school.

Conclusion

Soccer is a transformative force for youth, providing physical, mental, and educational benefits. It not only combats obesity and stress but also fosters discipline, teamwork, and leadership skills that prepare youth for successful futures.



■ STRATEGIC EXPANSION PLAN (USA)

The chart highlights key U.S. cities with high potential for the Spain Legends Soccer Institute's expansion, including New Jersey, Los Angeles, and Houston, with large, diverse populations and strong average incomes. **Latin population like Brazil & Portugal will increase the hispanic population mentioned below creating even a bigger demand in numbers.**

Beyond the U.S., the Institute plans to expand globally, with targeted locations offering opportunities for international interactions and cultural exchange.

These markets, combined with tailored financial models, position the Institute for growth and success, making it a compelling investment with global reach and impact.

Facility	Location	Population	Hispanic Population	County Avg Income USD	Year
1	New Jersey	932,202	195,997	101,144	1
2	San Jose , CA	1,927,852	481,963	124,055	
3	Washington, DC	705,749	77,632	86,420	2
4	South Korea	9,600,000	—	—	
5	Los Angeles, CA HQ	10,039,107	4,879,006	68,044	3
6	Orlando, FL	3,175,692	1,079,735	90,234	
7	Houston, TX (1)	4,746,600	2,061,000	61,705	4
8	Raleigh, NC	1,111,761	115,623	80,591	
9	Salt Lake City, UTs	1,160,437	218,162	74,865	5
10	San Diego, CA (1)	3,338,330	1,138,370	78,980	
11	Chicago, IL	5,150,233	1,318,459	64,660	6
12	Seattle, WA	2,252,782	223,025	94,974	
13	Atlanta, GA	1,063,937	76,605	69,673	7
14	Denver, CO	727,211	217,436	68,592	
15	Portland, OR	812,855	97,542	69,176	8
16	San Francisco, CA	881,549	133,995	112,449	
17	FT Lauderdale, FL	1,952,778	607,313	59,547	9
18	Phoenix, AZ	4,485,414	1,408,419	61,606	
19	Dallas, TX	2,635,516	1,075,290	59,607	
20	Houston, TX (2)	4,746,600	2,061,000	61,705	

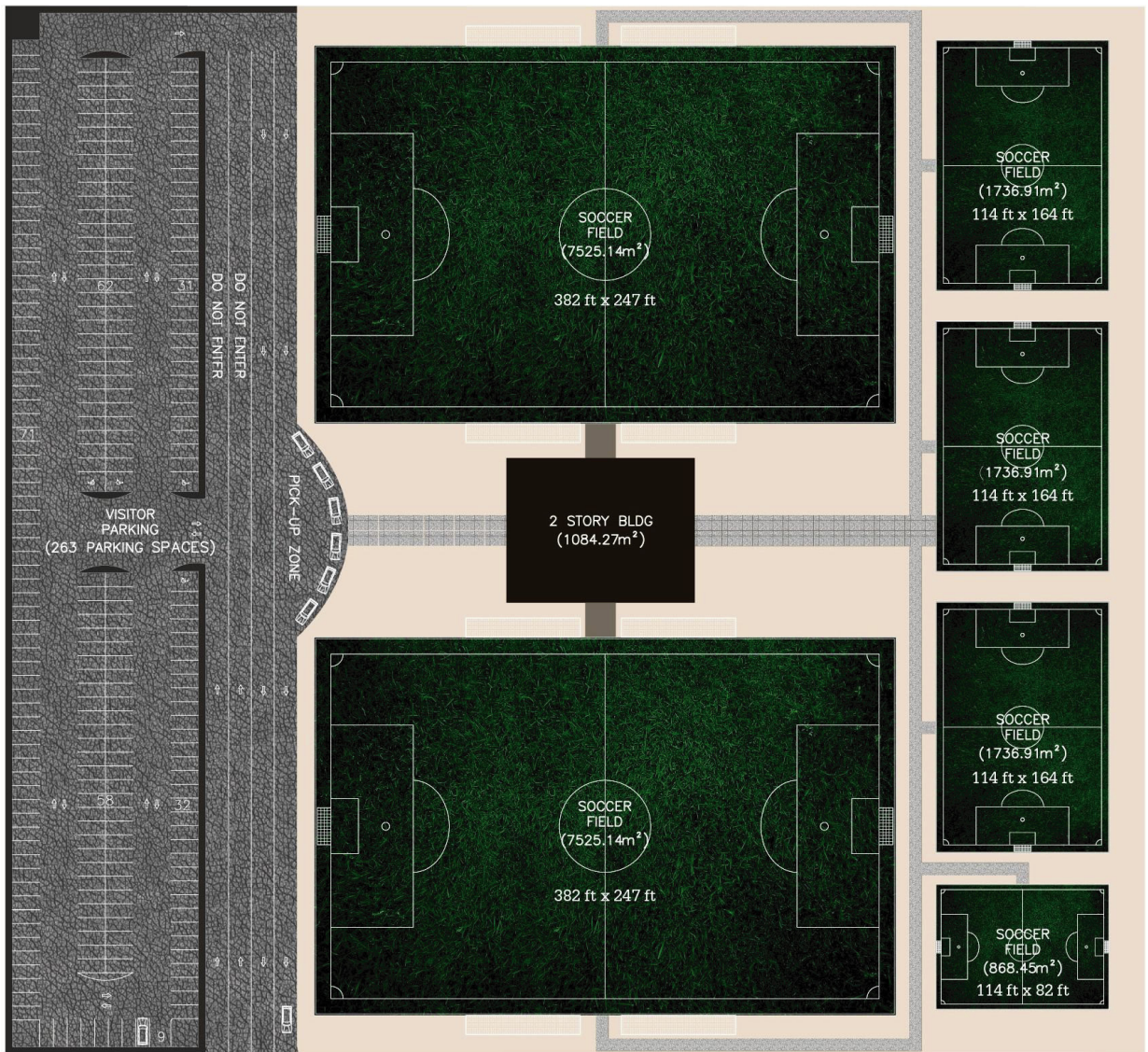


■ STRATEGIC EXPANSION MAP (USA)



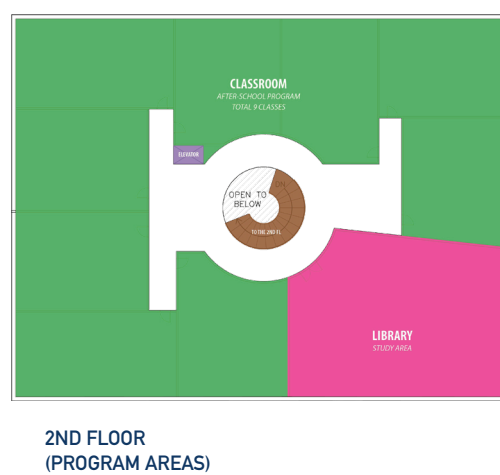
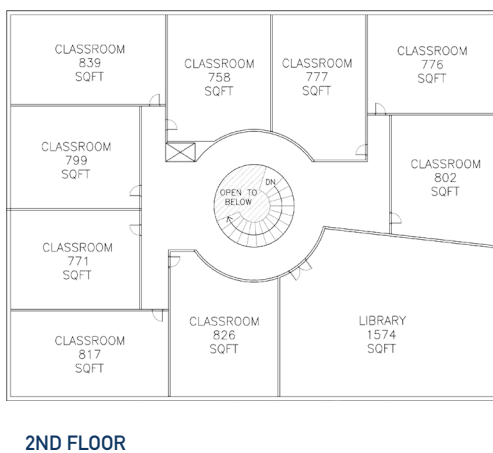
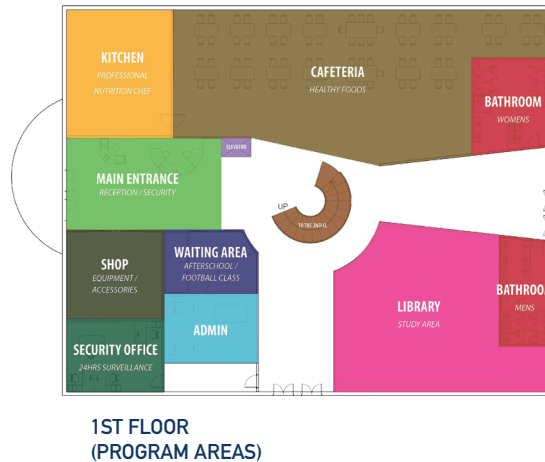
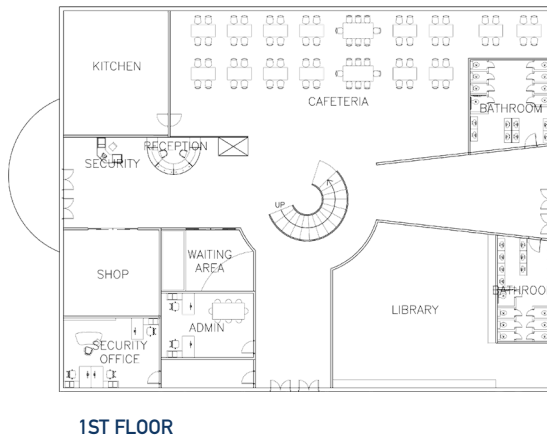


OVERALL LAYOUT "HQ"





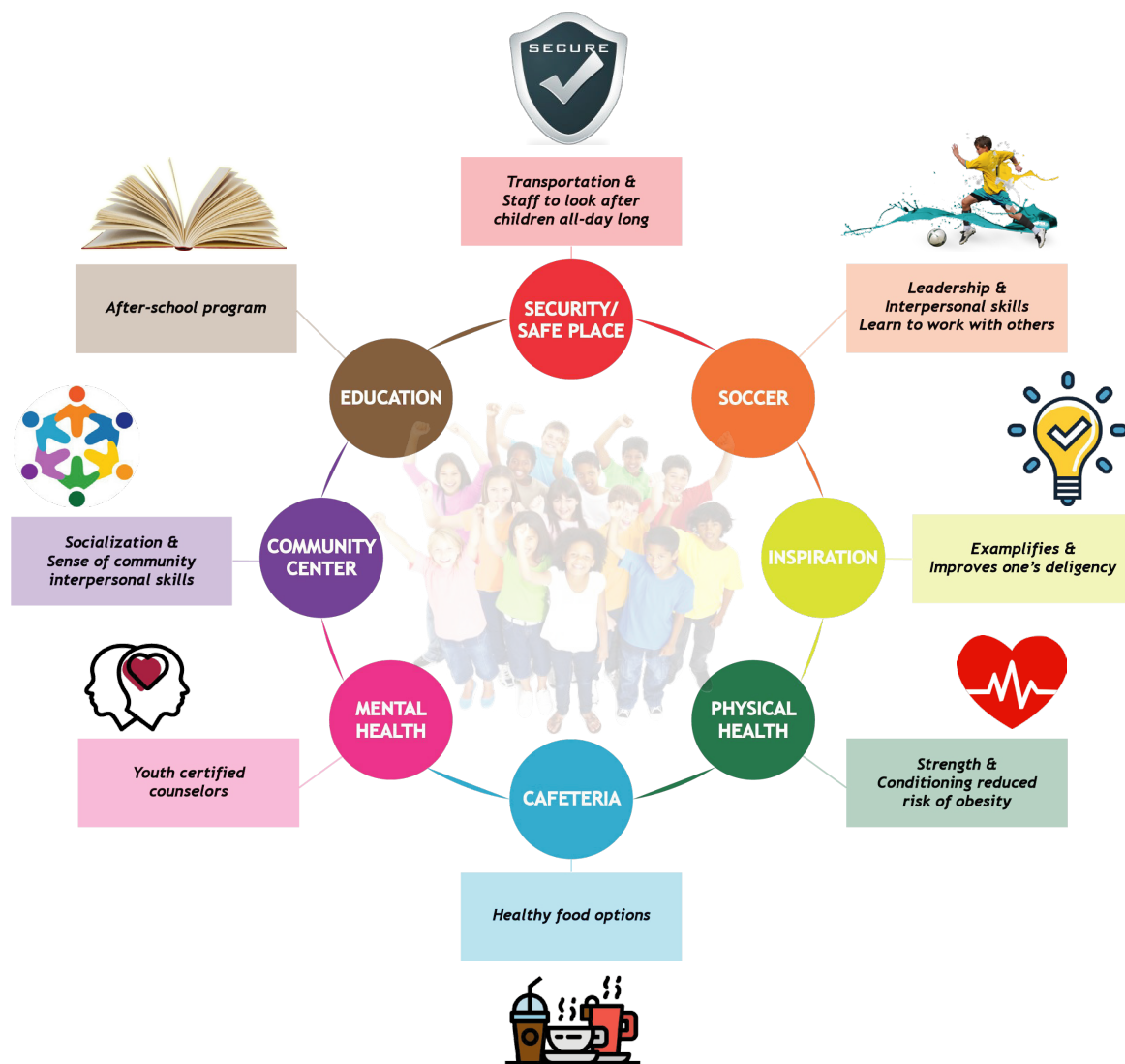
LAYOUT PROPOSAL "HQ"





WHY THIS WILL SUCCEED

WHY IS THIS NEEDED?
THERE IS NOTHING LIKE THIS
ALL IN ONE FACILITY





Unity Through Sports

Education • Community • Health

THE **LEGACY** FOR THE NEXT GENERATION

ADRIÁN LEE | CEO

KOSMOS SPORTS & ENTERTAINMENT LLC

📍 1061 Slocum Ave, Ridgefield, NJ 07657

✉ ael@kosmosports.com

☎ Cell: (+1) 201 407 9483

🌐 www.kosmosports.com
www.beneligroup.com



Confidentiality & Disclaimer

This document contains confidential and proprietary information of © Kosmos Sports & Entertainment, LLC. It is provided solely for discussion and evaluation purposes and may not be reproduced or shared without written authorization. All projections and statements reflect current expectations based on available data and strategic assumptions. While presented in good faith, actual results may vary depending on market and partnership conditions.



GLOBAL FOOTBALL MOMENTUM



**FIFA WORLD CUP
USA 2026 to Spain 2030**



Legends as the bridge





INVESTMENT PROPOSAL

**SOCCER TRAINING & EVENT FACILITY
NEW JERSEY METROPOLITAN AREA**



FIFA WORLD CUP HOST "NEW JERSEY"
A HISTORICAL MOMENTUM

Unity Through Sports
Education • Community • Health





■ SOCCER ACADEMIES INVESTMENT HIGHLIGHTS



NATIONAL BRANDING SECURED !!!
Legends of Spain backed by the Royal Soccer Federation of Spain



LEGENDARY PLAYERS !!!
500 + Iconic Stars that played for the National Team of Spain such as Xavi Hernandez, Iniesta, Torres, Ramos and more...



WORLD CUP 2026 MOMENTUM !!!
Right Time & Right Place !
Aligned with the Fifa World Cup 2026 Hosted in New Jersey - USA



STABLE ROI & GROWTH !!!
Strong demand with scalable expansion
Across us and global collaboration



GLOBAL NETWORK & PARTNERSHIPS !!!
USA - Korea - Spain -UK - Italy - Brazil - Argentina



■ INVESTMENT PROPOSAL

10 YEARS INVESTMENT PLAN

LOCATION: BERGEN COUNTY METROPOLITAN AREA, NEW JERSEY

INVESTMENT AMOUNT:

\$4,500,000

EQUITY & PROFIT SHARE:

40%

PROJECTED STRATEGIC ROI:

17.28%
Yearly Average

23.72%
Year 10

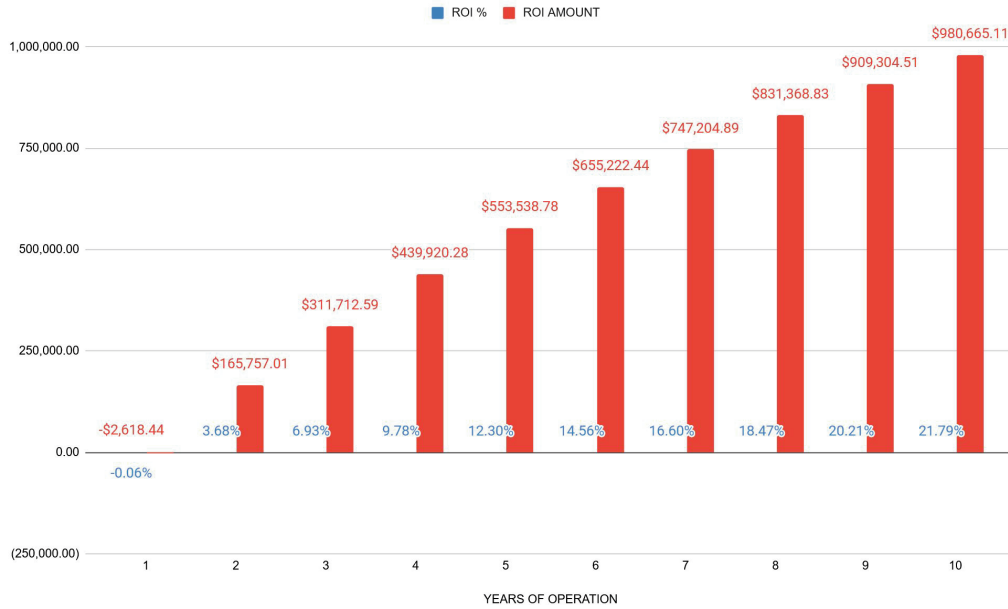
PROJECTED BUSINESS VALUE AT YEAR 10:

\$13,430,235

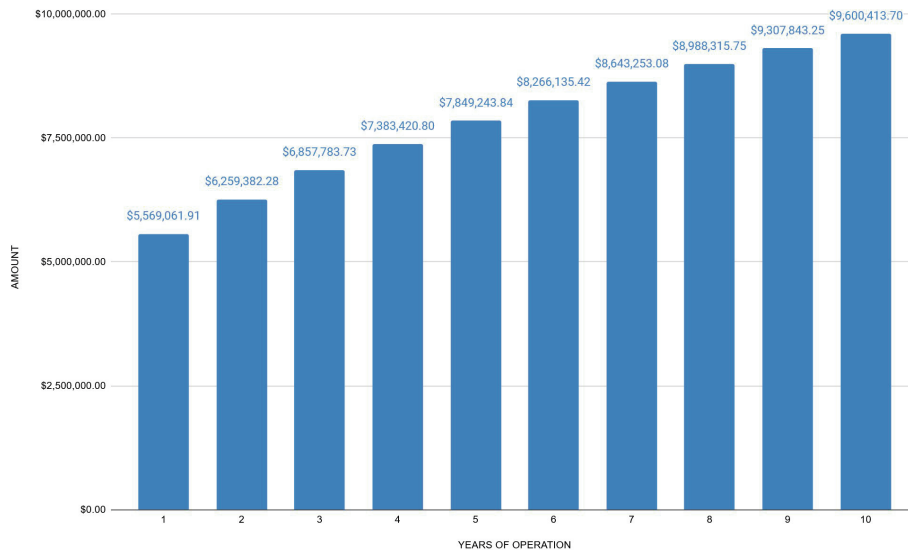
• Starting Vacancy Rate: 30%, with student numbers increasing by 20% yearly.



PROJECTED ROI



PROJECTED BUSINESS VALUE





■ INVESTMENT RETURN

Figures are based on conservative market research and branding potential, presented as projections to illustrate growth opportunities. With over 80,000 soccer players under the age of 20 in northern New Jersey alone, the market demand is clear and growing

TUITION
REVENUE

\$ 3,628,800

- ★ Yearly tuition: \$5,000
- ★ Monthly tuition: \$420 (x 720 kids x 12 months)
- ★ Revenue: \$3,628,800 (-50% expense)
- ★ Profit: \$1,814,400

ADDITIONAL
INCOME
VENUES

\$ 2,025,000

- ★ Summer Camp: \$800 (x 750 kids x 3 months)
- ★ Sponsors (50,000) | Souvenirs (25,000)
- ★ Space Night Rental (150,000)
- ★ Revenue: \$2,025,000
- ★ Profit: \$1,012,500

INVESTMENT
RETURN
LENGTH

4 Years

- ★ Total Revenue (Yearly): \$5,653,800
- ★ Total Profit (Yearly): \$2,826,900
- ★ Investor Profit (40%): 1,130,760



■ INVESTMENT DETAILS (NJ)

• PROJECT INFORMATION

LOCATION: USA - NEW JERSEY (World Cup 2026)

BUSINESS TYPE: SPORTS / EDUCATION / COMMUNITY / HEALTH

BUSINESS NAME: "Spain Legends Soccer Institutes"

BUSINESS OBJECTIVE: TALENT DEVELOPMENT | HEALTH | INTEGRITY

PROGRAM DEMOGRAPHICS & FOCUS: 6 to 20 years old

BRANDING RIGHTS: "Legends of Spain", "Commitment and support". Legendary Soccer Players

• EQUITY & PAYMENT SCHEDULE

INVESTMENT AMOUNT: \$4.5 M.

EQUITY: 40%

PAYMENT SCHEDULE:

30% at CONTRACT AGREEMENT

30% at ZONING & PLANNING BOARD Approval

40% at CONSTRUCTION PERMITS Approval

• RETURN ON INVESTMENT (ROI)

CONSERVATIVE SCENARIO

• Projected Annual ROI: **12.43%** (Average) / **21.79%** (Year 10)

• Projected Business Value in Year 10: **\$9,601,817**

STRATEGIC GOAL

• Projected Annual ROI: **17.28%** (Average) / **23.72%** (Year 10)

• Projected Business Value in Year 10: **\$13,430,235**

DISTRIBUTION & TRANSPARENCY

• Annual net profit share distributions

• Full financial reporting provided yearly

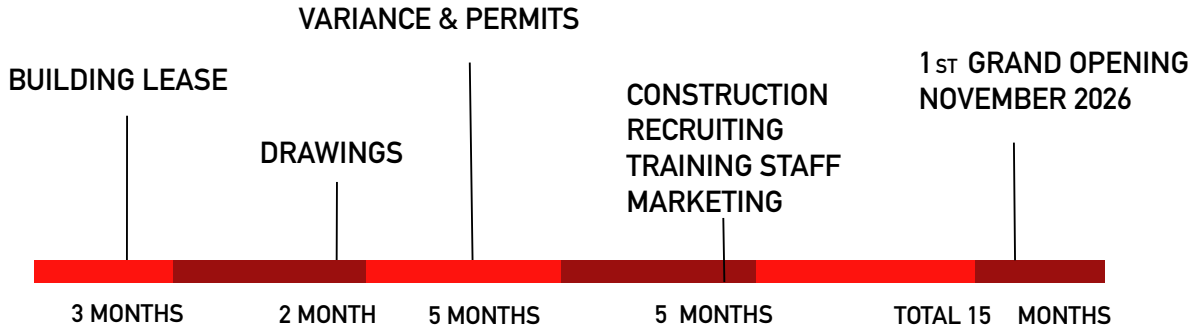


20
26





■ WORK TIMELINE



■ PROJECTED EXPENSES

ITEM	ACTIVITY	AMOUNT
1	Property Lease (Security Deposit)	\$281,250
2	Drawings (Architectural and Engineering)	\$115,000
3	Zoning & Planning Board / Lawyer, Planner... (Permits)	\$15,000
4	Building Department (Permits)	\$69,000
5	Construction Execution	\$2,300,000
6	Marketing Development & Advertisement	\$100,000
7	IT and Operating System Development	\$50,000
8	Sports Store (Merchandise)	\$50,000
9	Management & Logistics to Open Institute (15 Months)	\$300,000
10	Property Rent	\$375,000
11	Operating Staff and Coaches	\$135,000
12	Furniture, Equipment, and Miscellaneous	\$409,750
13	Royalty	\$300,000
TOTAL INVESTMENT PER INSTITUTE		\$4,500,000



■ PROJECT EXECUTION PLAN

To ensure the success of this soccer project, tailored to maximize the use of the property. The entire project will be developed in the metropolitan area of **New Jersey, San Jose CA, Washington DC and Korea (HeadQuarter on next page)** under the following premises for available property:

Soccer Facility Development – Renting Warehouse

Objective:

To establish a fully functional soccer facility by adapting a 75,000 square foot rented warehouse for each location. The project will deliver high-quality fields, training areas, and supporting amenities for athletes, staff, and visitors within a 15-month timeline for each location.

Scope:

Adaptation of Space:

- Construct and equip **3 soccer fields for 7vs7 players and 1 field for 5vs5 players.**
- Develop supporting facilities, including reception area, locker rooms, office(s), conference room(s), sports shop, food & beverages retail, and Lounge.

Key Advantages:

- **Cost-Effectiveness:** Lower initial investment due to the rental model.
- **Flexibility:** Allows for scalability and short-term execution.
- **Optimized Layout:** Tailored to provide high-quality playing and training areas for 7vs7 and 5vs5 players.

ANNUAL SOCCER PROGRAM				
	Groups per day	Groups per Week	Students per Group	Students per Month
9 Month Program	12	36	20	720
Summer Camp	15	60	20	1200



■ KEY INVESTMENT DRIVERS

- **Spain Legends Brand:** Institucional credibility through Legends of Spain & Royal Federation backing.
- **Scalable Education Model:** Repeatable methodology driving enrollment and Long-term growth.
- **Global Exchange:** Cross-continent programs linking USA, Europe, Asia, and LATAM.
- **High-Performance Facilities - Revenue - generating hubs** for training and events.
- **Community & Civic Ties - Gover and sponsor partnerships** strengthen stability.
- **Wellness Edge** - Health and lifestyle alliances expand sponsorship categories.

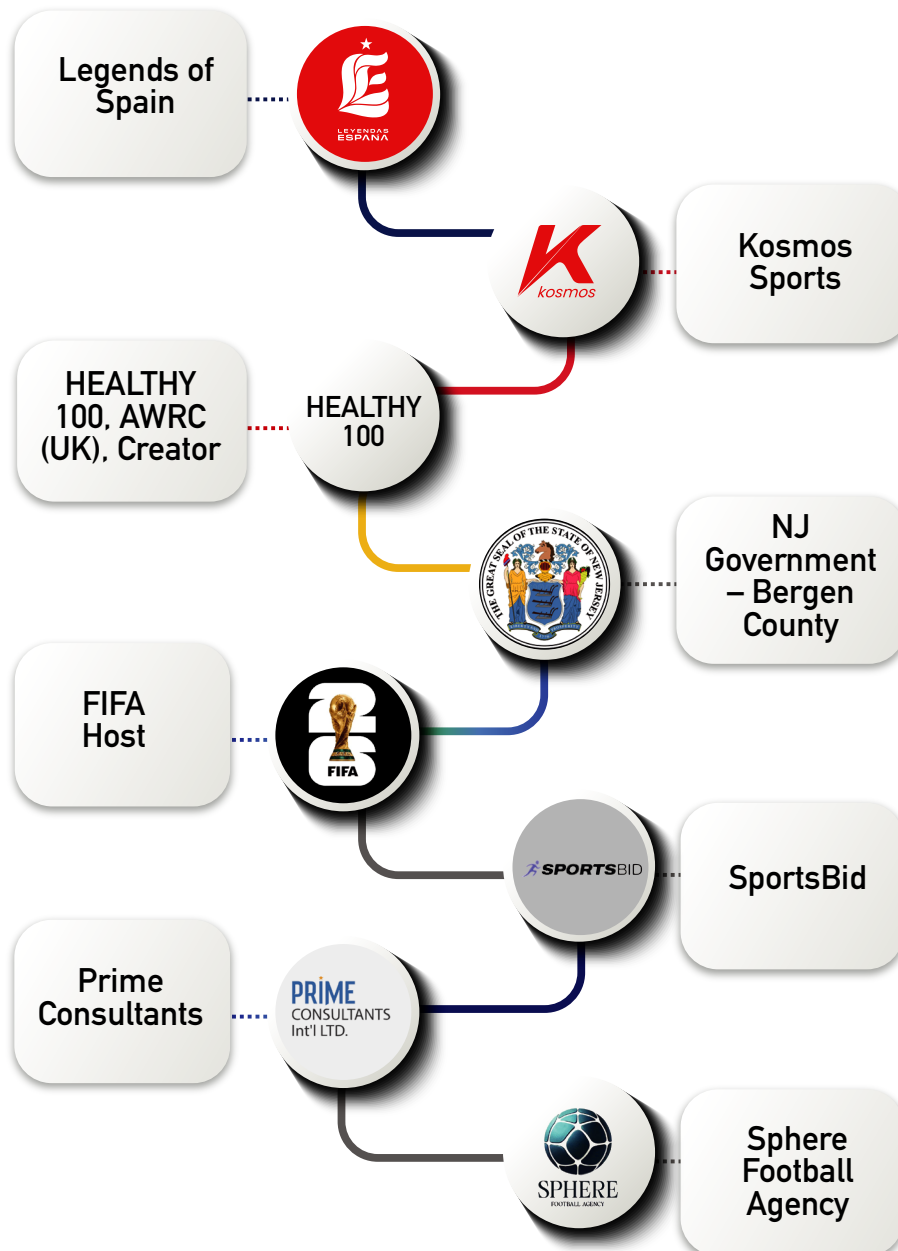
■ INVESTOR BENEFITS

- ✓ · **Profit Share for Life** - Permanent stake in net profits.
- ✓ · **Recurring Revenues** - Diversified income streams: tuition, sponsorships, events, media.
- ✓ · **Exclusive Rights** - Use of Spain Legends brand & star player access for sponsorship/ media leverage.
- ✓ · **First - Mover Advantage - Defensive position** for FIFA 2026 visibility.
- ✓ · **Scalable Growth** - Expansion across USA internacional hubs.
- ✓ · **Tangible Asset Development** - Long - term facility and infrastructure value creation.
- ✓ · **Diverse Revenue Streams** - Tuition, sponsorships, events, media & player programs.



■ STRATEGIC PARTNERS & GUESTS

• Logo wall:



A soccer ball sits on a green grass field. In the background, a soccer team in light blue jerseys and dark blue shorts is lined up. An orange cone is visible to the right of the ball.

SPORTS & EDUCATION

A globe of the Earth is held in the center by many hands reaching in from all directions. The background is a blurred crowd of people.

COMMUNITY & HEALTH

A person is seen from behind, celebrating with their arms raised in a stadium. The background is filled with bright fireworks and a large crowd of spectators.

ENTERTAINMENT



From USA 2026 to Spain 2030

A Decade of Global Football



Unity Through Sports
Education • Community • Health



Unity Through Sports

Education • Community • Health

THE LEGACY FOR THE NEXT GENERATION

ADRIÁN LEE | CEO

KOSMOS SPORTS & ENTERTAINMENT LLC

📍 1061 Slocum Ave, Ridgefield, NJ 07657

✉ ael@kosmosports.com

☎ Cell: (+1) 201 407 9483

🌐 www.kosmosports.com
www.beneligroup.com



Confidentiality & Disclaimer

This document contains confidential and proprietary information of © Kosmos Sports & Entertainment, LLC. It is provided solely for discussion and evaluation purposes and may not be reproduced or shared without written authorization. All projections and statements reflect current expectations based on available data and strategic assumptions. While presented in good faith, actual results may vary depending on market and partnership conditions.



SPAIN LEGENDS SOCCER INSTITUTES

SOCCER TRAINING & EVENT FACILITY
NEW JERSEY METROPOLITAN AREA

Unity Through Sports

Education • Community • Health

FIFA WORLD CUP HOST "NEW JERSEY"
A HISTORICAL MOMENTUM

